

KeyRail® EXT#2355

SILICONE EXTRUSION MADE FOR KEYRAIL® FAÇADE SYSTEMS

Product description

KeyRail® EXT#2355 is a silicone extrusion product manufactured exclusively for KeyRail® façade systems expansion joints.

Properties

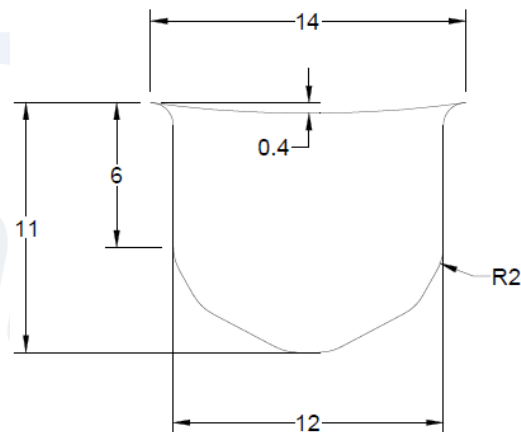
The product is made from general purpose silicone and in black and can be made in different colours as required.

Safety Notes

We recommend running preliminary tests to ensure the product material and cross-section profile suit the application and meet the desired performance criteria.

Product Cross-Section Dimensions And Tolerances

A general tolerance of $\pm 0.2\text{mm}$ is applied for all dimensions for the below profile:



Product Data

Characteristics	Description
Material Composition	\approx %100 Silicone (Less than %1 of the material is pigment)
Colour	Black
Density	$1.12 (\pm 0.1) \text{ gr/cm}^3$
Temperature Range	-20°C to $+60^\circ\text{C}$
Stability	UV and Ozone Resistant
Hardness	40 Duro
Tensile Strengths	10 MPa
Tear Strengths	17N/mm
Elongation at Break	610%
Shelf life	20 Years